

CUSTOMER TERMINAL	RoHS	LEAD(Pb)-FREE
Sn96%, Ag4%	Yes	Yes

more than you expect



ELECTRICAL SPECIFICATIONS @ 25°C unless otherwise noted:

PARAMETER	TEST CONDITIONS	VALUE
D.C. RESISTANCE	1-4 tie(2+3), @20°C	3.00 ohms max.
D.C. RESISTANCE	8-5 tie(6+7), @20°C	1.50 ohms max.
INDUCTANCE	1-4 tie(2+3), 10kHz, 100mVAC, Ls	470uH ±10%
LEAKAGE INDUCTANCE	1-4 tie(2+3, 5+6+7+8), 1MHz, 100mVAC, Ls	0.6 - 1.0uH
INTERWINDING CAPACITANCE	1-8 tie(1+4, 2+3, 5+8, 6+7), 100kHz, 100mVAC, Cs	100pF max.
INTERWINDING CAPACITANCE	1-4 tie(1+3, 2+4, 5+8, 6+7), 100kHz, 100mVAC, Cs	75pF max.
INTERWINDING CAPACITANCE	8-5 tie(5+7, 6+8, 1+4, 2+3), 100kHz, 100mVAC, Cs	75pF max.
DIELECTRIC	1-8 tie(2+3, 6+7), 1875VAC, 1 second	1500VAC, 1 minute
URNS RATIO	(1-3):(2-4)	1:1, ±1%
URNS RATIO	(1-3):(8-6)	1.4:1, ±1%
URNS RATIO	(1-3):(7-5)	1.4:1, ±1%
URNS RATIO	(1-4):(8-5), tie(2+3, 6+7)	1.4:1, ±1%
TOTAL HARMONIC DISTORTION	25kHz, 2Vrms across PRI, 51 ohm load, 100 ohm input, tie(2+3, 6+7)	-75dB max.
LONGITUDINAL BALANCE ¹	25k - 12MHz	41dB min.
LONGITUDINAL BALANCE ¹	12M - 17MHz	38dB min.
LONGITUDINAL BALANCE ¹	17M - 30MHz	30dB min.

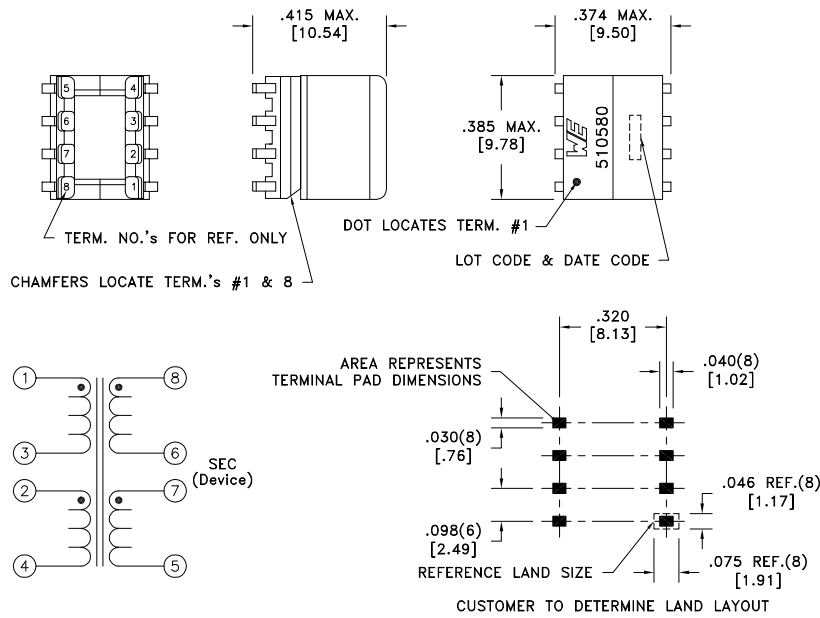
¹Per ITU G.993.2 requirements +3dB.

GENERAL SPECIFICATIONS:

OPERATING TEMPERATURE RANGE: -40°C to +85°C.

Designed to comply with the following requirements as defined by IEC60950-1, EN60950-1, UL60950-1/CSA60950-1 and AS/NZS60950.1:

- Functional insulation for a primary circuit at a working voltage of 250Vrms.



Wire insulation & RoHS status not affected by wire color.
Wire insulation color may vary depending on availability.

DETAILS SUBJECT TO CHANGE

REV.	DATE	Packaging Specifications Method: Tape & Reel PKG-0410 www.we-online.com/midcom		Tolerances unless otherwise specified: Angles: ±1° Fractions: ±1/64 Decimals: ±.005 [.13] Footprint: ±.005 [.13]	DRAWING TITLE TRANSFORMER	PART NO. 750510580
6B	10/15			This drawing is dual dimensioned. Dimensions in brackets are in millimeters.	eiSos p/n: 750510580	compliant RoHS
6A	9/15	SEE REVISION SHEET FOR REVISION LEVEL				SPECIFICATION SHEET 1 OF 1